

SCHOOL READINESS TAX CREDITS

For every dollar up to \$5,000 contributed to the Coalition, businesses will receive a dollar-for-dollar refundable credit on Louisiana State taxes - redirecting tax liabilities locally into quality early childhood experiences through training, coaching, equipment and partnerships. We would like to thank the following businesses:

Adrian James Logging, Inc.	David Jenkins Consulting, Inc.	Columbia, Inc	Progressive Bank
Alex Bonsall Medical Services	David M. Hartt, CPA	Kidney Services of Northeast Louisiana, APMC	RAL Interests, LLC
Alfred Ray Moss Consulting, Inc.	David T. Cole, CPA	Kimpa Hayes Boyd, CPA, LLC	Raymond Enterprises of Louisiana, LLC
Allen, Green & Williamson, CPA	Delta Tire of Winnfield, Inc.	Laura Wood Agency, LLC	Renal Services of Northeast Louisiana, APMC
Angie Sanders Ad Group	Don Tant Logging, Inc.	Lee A. Miller, MD, APMC	Richard Gayle Consulting, LLC
Atkins Rental Properties	Doughty Consulting, LLC	Linus Carroll Medical Corporation	Riddle Builders
Atkins Well Service, Inc.	Dustin Williams Consulting, Inc.	Louisiana Agricultural Corporation, LLC	River Ridge Renovations, LLC
B&C Archery, LLC	Eric T. Geist D.D.S. APC	Lousiana Plastic Industries, Inc.	RJP Enterprises, LLC
B.A. Electrical, LLC	FEPS, LLC	MD Smith Lumber Company, LLC	RLG Consulting, Inc.
Bamburg Consulting Inc.	Financial Institution Service Corporation	Mark C. Napoli, M.D.	Rodney Alexander, LLC
Barton Mowing Service	Fisher Management and Investments, LLC	Mark Johnson Plumbing	Ronnie L Darden Farms
Blackwell Chambliss Law Firm	Freeman Lumber LLC	Matthew W. Fowlkes, DMD, MD, LLC	Ronnie Laird Consulting Inc.
Blake Wheelis Insurance Agency, Inc.	Gaar Timber, LLC	McFarland Timber, Inc.	Rosalie Estates, LLC
BNR Drilling, LLC	Ganey Consulting, LLC	McKeithen & Lewellyan Professional Law Corp	Roszell Consulting, LLC.
Boardwalk Consultants, LLC	Gregoire Consulting, LLC	McLawrence Foods, LLC-Mac's Fresh Market #1	Rowland Logging, Inc.
Book's Pharmacy, LTD	Griffin Funeral Home	McLawrence Foods, LLC-Mac's Fresh Market #2	Scott Equipment Company, LLC
Brad Pritchard Consulting, Inc.	Gulf Inland, LLC	McManus Timber Company, Inc	Scott Equipment Sales, LLC
Breard Shore & Associates, Inc.	Gulf South Warehouse, LLC	MCS Two, LLC	Scott Financial Services, LLC
Brent Bryant, LLC	Gwin Consulting, LLC	Melanie Turpin DDS, LLC	Sherry Kenney Farms
Buster Sharp & Sons, Inc.	Hatten Tire Center, Inc.	MGK Consulting, LLC	Sierra Land Services
C3 Consulting, LLC	Heard, McElroy & Vestal, LLC	Mixon & Carroll, APLC	Simply Nutrition
Carpet Care Cleaning & Restoration	Hercules Transport, Inc.	Mixon, Carroll & Fraizer, PLLC	Skent N Dent Home Appliance Outlet
Carr's Dirt Works & Pipeline Services, Inc.	Holyfield Assets, LLC	MLP Enterprise, Inc.	Steven H. Gaar Logging, Inc.
CC Sampognaro	Holyfield Construction, LLC	Murphey Consulting Services, Inc.	Stott Transport, Inc
CET, LLC	Holyfield Investments, LLC	Murphrey Oil Company, Inc.	Stott Wood Company
Chad Shields, FNP-C, LLC	Holyfield, Inc	Neal Consultants LLC	Strauss Properties, LLC
Charles Marsala, LLC	Holyfield, Inc	Nelson & Sons, Inc	Strauss Tallulah, LLC
Chris Thomas, LLC	Ingles Timber Inc.	Nomad Management, LLC	Super Sign Mart, Inc.
CMK Therapy, LLC	J & K Drugs, Inc.	Northeast Renal & Dialysis, APMC	TV. Resources, Inc.
CND Reed Family, LLC	J. Gray Consulting	Northgate Development, LLC	The Kirksey Agency, Inc.
Cognitive Development Center	J.C. Maxwell Consulting, Inc.	O'Nealga, Inc.	The Orthopaedic Clinic of Monroe, Inc.
Corbin J. Turpin, III DDS, LLC	J4 Consultants Inc.	Origin Bank	The Scott Corporation, LLC
Crossroads Legacy, LLC	Jason Scott Consulting, LLC	P & R Properties, LLC	Therapy Fields Farms
Cub Creek Investment Inc.	Jennifer David, LLC	P TWO, LLC	Thomas & Farr Agency, Inc.
Cusom Call Center	JGH Architectural Interiors Inc.	Parts & Service, Inc.	Thomas Howard Consulting, Inc.
Custom Fabrication & Consulting, LLC	John S. Carroll, CPA	Phillip Atwood Consulting, LLC	Tim Simons Logging, LLC
D & B Consultants, LLC	Johnson Physical Therapy	Pineland Contracting, Inc.	Tuner Rexall 1136, LLC
D & L of Ouachita	JRU Consulting, LLC	PK Morris, John Rea Realty	Vantage Health Plan
Daniel Stevens Consulting, LLC	Julie Mays Interiors		Williamson Consulting Group, LLC
Darren Ford Insurance, Inc.	K & K Boyd Enterprises, LLC		Wise Mud Consultants, LLC
	Kathryn Ryland Rental Properties		Woodmen Life/Woodmen Financial Service
	KAT-WAY, LLC		
	KB Will, Inc.		
	Keahey Flying Service of		

2018-2019

ANNUAL REPORT



CHILDREN'S
COALITION
For Northeast Louisiana

Creating communities where children and families thrive.

LEADERSHIP & STAFF

Lynn Clark, Ph.D. Executive Director



The Children’s Coalition has always been about communities. Our mission statement—creating communities where children and families thrive—highlights the pluralistic view that we acknowledge and respect the unique strengths of geographic and cultural groups in our region, while celebrating our unity by coming together in support of our children. This year different communities in northeast Louisiana have truly helped all of our children thrive. As you read through the annual report, see how Franklin Parish has encouraged children and families to “Talk, Read and Play” together, and how U-ACT, in Union Parish, continues to provide positive alternatives to underage drinking and prescription drug abuse by supporting local kids and their culture. In Morehouse Parish the medical and early childhood communities collaborate to improve early childhood outcomes through Kid’s First Morehouse, and in Lincoln Parish the Family Resource Center staff have created satellite parenting classes for new Moms. Ouachita Parish continues to be a hub of resources for the region. Programs like Early Head Start are the standard for quality early childhood care and education; Greauxing Gardens supports 22 child care centers in five parishes, and the Family Resource Center and Child Care Connections support all parishes in the region. In our board room, we have a large map of our region; on it are dots and stars where we have programs or impact. Some parishes have lots, some have less, but as we look forward to the next 20 years at the Coalition, our goal is to shower each community with the programs and people they need to truly thrive.



Cynthia Rodriguez President

This is a special time for the Children’s Coalition for Northeast Louisiana. The momentum of a milestone year, 20 years, gives us a refreshing sense of strength. We look back to recognize these years have allowed us to build trust and deepen our foundation. Now, there is a new hope and desire within us. To look further outward. To extend our reach and support by making many more meaningful and collaborative partnerships in our

neighboring parishes and communities. And only together, we can take steps forward toward a whole community where children and families thrive.

I am so thankful to everyone, past and present, that has dedicated time, support, or whatever they could, to give back to our community and to our mission. I am very confident in all of us pressing forward. And continue as we are known, by sharing respect, empowerment, empathy, passion, and sense of community toward one another.

I love witnessing this mission in action. And I love imagining the future of our region of Louisiana. I look forward to this chapter of 2019-2020.

BOARD OF DIRECTORS

Lynn Clark, Ph.D.
Executive Director

EXECUTIVE OFFICERS

Cynthia Rodriguez,
President
Mark Parrish, **Past President**
Mark Wilson, Ph.D, LPC-S,
President Elect
Alpa Patel, **Secretary**
David Hartt, CPA, **Treasurer**

BOARD MEMBERS

Kathryn Bagley, LMFT
Janis Barraza -Bunch
DDS, MSD
Rev. Tommy Carr
Laura Clark
Tracy Crump
Rev. C. Welton Gaddy
Donna Guice
Heather Guillot

Leigh Hersey, Ph.D
Jennifer Johnson, J.D.
Lisa Kiper
Lisa Miller, M.Ed.
Cleveland Mouton, III
Carmen Sims, RN, BSN
Jason Stewart
Harrington Watson, III,
Ed.D
Eva Dyann Wilson

STAFF



Ciara Cloman
Shavonta Conner
Cynthia Conway
Octaevia Crockhom
Sandra Daigre
Jessica Dunaway
Larhonda Elzie
Bridgette Foy
Alexis Gix
Shanika Gix
Lakeisha Gix Cooper
Amy Goodman
Misti Guerrero
Valerie Hall
Jasmine Harris
Kelsee Harris
Lakika Hatfield
Kimberly Jackson
Sarsobu Jackson
Kaitlyn James
Kawondria Jenson
Tamika Johnson
Rachel Kelly
Shafounda Kline
Michele Lofton
Jocelyn Oney
Lakietsha Pierce
Kizzy Pierce-Dorsey
Sara Prewitt
Taneiqua Rice
Chelsea Roberts
Thomas Rogers
Christi Ross

Journee Sheppard
Daphne Smith
Lushenda Spinks
Orelia Taylor
Lasheka Thornton
Krista Townley
Kenyada Turner
Roberta Walker
Amanda Washington
Kia Williams
Sharonda Wilson
Tera Wright

HEALTHY LIVING

Mary Barrios
Jiame Brown
Shauna Harrell
Patti McGilton
Tammy Washington

PARENTING

Shirley Coker
Eliza Draper
Ieisha Dunn
Andrea Eppinette
Damon Nailer
Ivy Parhms

YOUTH DEVELOPMENT

Jan Daniels
Merion Sanderson

ADMINISTRATION

Lynn Clark
Angela D’Angelo
Andrea Dyer
Sarah Mouton Floyd
Eddi Hernandez
Antoinette Hoard
Cara Johnson
Douglas Kimes
Shondranise Wright

Amy Clancy
Alex Cory
Earnestine Dunn
Julia Emory
Aven Ford
Chasidee Lewis Baker
Katie McLain
Christina Moore
Karla Parker
Ashley Talbert

EARLY CHILDHOOD

Anna Akins
Gerry Binkley
Jasmine Brisco
Cynthia Cage
Jennifer Calhoun

EARLY HEAD START

Sonia Amos
Takebra Andrews
Erika Breshears
Kelsey Brice
Janet Campbell

TALK, READ, PLAY EVERY DAY IN FRANKLIN PARISH

As a community wide effort, Talk, Read, Play Every Day in Franklin Parish began in December 2018 to provide community support for children in Franklin Parish. This project is funded by countless community sponsors and School Readiness Tax Credits.

Through intense CLASS Support training from our Child Care Connections team, all Type III Child Care Centers received improvements in their quality scores from the Louisiana Department of Education. The Born Learning Trail was installed in Davis Park, featuring 10 opportunities for children and families to interact while learning. An Early Childhood Literacy Hub at the Franklin Parish Library is a developmentally appropriate space for young children and their families to discover literacy and learn together. Seven Little Free Libraries are located across Franklin Parish, which are book-sharing boxes improving access and thus improving literacy.



GREAUXING GARDENS

The Children's Coalition Family Garden is part of the revitalization effort in downtown Monroe.

IN MONROE ALONE:

- 43% of the population live in food deserts and
- 14% of low-income preschoolers are obese.

Although federal feeding programs provide funding for child care gardens, when polled less than 10% of child care centers in Ouachita Parish knew about the policy, even though 85% of centers wanted to plant an edible garden.

In March 2019, we partnered with LSU AgCenter and created "Greauxing Gardens"

to train teachers and directors from 22 child care centers on how to create and maintain edible gardens in their centers.

GREAUXING GARDENS:

- **Has given** each center the supplies needed to build and maintain garden beds at their location
- **Provides** each center monthly nutrition coaching to incorporate fresh produce into each child's diet

Currently 90% of the gardens are flourishing with the help of little hands and creative teachers.

Our Family Garden has encouraged community involvement with church

U-ACT

On February 5th, the Union Parish Alliance for Community Transformation, U-ACT, was one of 112 community coalitions honored during a graduation ceremony at Community Anti-Drug Coalitions of America's (CADCA) National Leadership Forum, just outside of Washington, D.C.

The Children's Coalition for Northeast Louisiana received a Drug-Free Communities (DFC) Support Program grant totaling \$625,000 to prevent youth substance use, including prescription drugs, marijuana, tobacco, and alcohol. The DFC program, created by the DFC Act of 1997 is the Nation's leading effort to mobilize communities to prevent youth substance use and is directed by the Office of the National Drug Control Policy (ONDCP). Grants are provided to community coalitions to strengthen the infrastructure among local partners to create and sustain a reduction in local youth substance use.



"Estoy orgullosa de que mi hija pertenezca a un programa que le haya ayudado tanto." - Ariana Palomo, mother of Ambassador Soledad Palomo.

"I am proud that my daughter belongs to a program that has helped her so much."

groups, youth, garden enthusiasts and beginners alike. We work in conjunction with LSU Ag, Northeast Louisiana Master Gardeners and 4H Leaders and students in Northeast Louisiana to promote healthy eating by connecting children and families to the food they eat.

We open the gates to the Family Garden every third Saturday of the month to host Super Saturday.

SUPER SATURDAY FEATURES:

- Garden-based activities for children and adults
- Early childhood activities in the outdoor learning center
- Healthy cooking demonstrations using fresh produce grown locally
- Community resources and volunteer opportunities



EARLY HEAD START

Jennifer Harris is a parent with two children in the Early Head Start Child Care Partnership program at The Little ARC Academy, a partner site of Early Head Start. EHS provides early, continuous, intensive, and comprehensive child development and family support services to low-income infants and toddlers, children with disabilities and their families, and pregnant women and their families. The principles of Early Head Start are designed to nurture healthy attachments between parent and child, emphasize a strengths-based, relationship-centered approach to services, and encompass the full range of a family's needs from pregnancy through a child's third birthday.



"I have had the opportunity to experience love and growth within the organization and it is amazing."

- Jennifer Harris

With support from their teachers and family, her children have experienced tremendous mental and physical growth. Jennifer praises the support by all EHS staff, and especially her Family Service Advocate, LaSheka, well beyond her child's needs.

OUTCOMES

206 foundational learning opportunities + trainings
 9 Number of Pregnant moms served
 177 Number of Families served
 12 Married
 165 Single
 129 Average monthly enrollment

132 Funded enrollment
 97 Number of families on waiting list
 188 Parents in Parent Involvement Activities including policy council, parent committee, volunteer at events, classroom or home visits
 255 Individual Community Volunteers

HEALTH SERVICES

Children up to date on receiving dental exam **98%**
 Children up to date on EPSDT exam **100%**
 Children up to date on Immunization **97%**

EDUCATION & DISABILITIES

Children with disabilities served **15%**
 Children who are at or above development by the end of the year **67%**

PREPARING FOR KINDERGARTEN

SCHOOL READINESS GOALS

LANGUAGE & COMMUNICATION — CHILDREN WILL:

AGE TWO: Progress in their ability to physically and verbally communicate to others.

AGE THREE: Show interest and knowledge of the sounds and patterns of the spoken and written language.

COGNITION — CHILDREN WILL:

AGE TWO: Gain understanding of the objects and people in their environment, how they work, how change happens, and being able to make connections between new and old information through all senses.

APPROACHES TO LEARNING — CHILDREN WILL:

AGE TWO: Demonstrate persistence and reasoning to reach a specific goal.

SOCIAL & EMOTIONAL DEVELOPMENT — CHILDREN WILL:

AGE TWO: Learn and establish ways to recognize and positively manage their emotions and behaviors.

PERCEPTUAL, MOTOR, & PHYSICAL DEVELOPMENT — CHILDREN WILL:

AGE TWO: Develop controlled skills for small muscles of fingers and hands through exploring and using objects in the environment.



5 year Monitoring Review from the Office of Head Start
 January 2016- Environmental Health & Safety- 100% Compliance
 February 2016- Fiscal Integrity/ERSEA- 100% Compliance

EARLY CHILDHOOD

CHILD CARE CONNECTIONS

LOUISIANA
DEPARTMENT OF
EDUCATION

Helping parents find quality child care, providing training, and coaching to child care providers region-wide (11 parishes)

- 105 foundational learning opportunities + trainings
- 1,271 teachers trained, an average of 105 per month
- 497 targeted technical assistance/coaching sessions
- 50 child care referrals



Early childhood educators participate in Summer Spectacular workshop, funded by School Readiness Tax Credits.

Al's Pals, U-ACT and Kids 1st Morehouse were recognized as part of the Maternal, Infant, and Early Childhood Home Visiting (MIECHV) Programs.



KIDS 1ST MOREHOUSE

EARLY CHILDHOOD
COMPREHENSIVE
SYSTEMS

Connecting systems that impact families to create improved developmental outcomes for children ages 0–3 in Morehouse Parish.

- 10 Little Free Libraries Community Wide
- 1000+ books in the hands of young children
- 500+ families receiving developmental support information

ANCILLARY TEACHING CERTIFICATE

LOUISIANA
DEPARTMENT OF
EDUCATION

Providing education and training to teachers, enabling them to obtain credentials in early learning centers.

- 13 graduates from Cohort 4 have all received letters from Pathways, 7 have received their CDA and ATC, 2 are in the process of receiving their CDA, and 4 are pending a PDS visit
- 40 candidates actively enrolled in Cohort 5
- 59 graduates as of May 2019

PRESCHOOL EXPANSION CLASSROOMS

LOUISIANA
DEPARTMENT OF
EDUCATION

Providing quality preschool programs with a certified teacher in age-appropriate settings in partnership with Monroe City Schools and Union Parish Schools

- 40 Pre-K children served at Little Flower Academy in partnership with Monroe City Schools
 - 2 certified teachers
 - 2 teachers received their CDA
- 20 Pre-K children served at Downsview Community Charter School in partnership with Union Parish School District
 - 1 certified teacher
- 117 children at Little Flower Academy supported by CLASS Coaching



Little Flower Academy received the Honor Roll Award from the Department of Education for their excellence in high-quality instruction and care.

Leaders at MCIO Headstart promote early childhood enrollment during a MORE Network event in Morehouse Parish.

COMMUNITY NETWORKS

LOUISIANA
DEPARTMENT OF
EDUCATION

Working to unify the early childhood system through streamlined program expectations, supporting teachers and coordinating enrollment and observations in three parishes: Ouachita, Morehouse and Richland

- 104 Early Learning Centers (child care, LEA, EHS/HS)
- 532 CLASS Observations
- 10,000+ parents contacts
- 55 Early Childhood Leaders meet monthly



Cassie Greer Talley

ATC Cohort 4 Graduate | Child Care Director in Mangham, LA | SRTC Directors Institute

My first step of beginning my Ancillary Teaching Certificate + CDA classes turned into a tremendous leap into childcare and I obtained both and completed my NAC. The Coalition staff is amazing, they treat me like family and they always have the child's best interest in mind.

HEALTHY LIVING

AL'S PALS: KIDS MAKING HEALTHY CHOICES

NORTHEAST DELTA
HUMAN SERVICES
AUTHORITY

Teaching preschool children the social-emotional and resiliency skills needed to make healthy choices.

39 schools and 6 child development centers

124 classrooms receiving service

2,221 children receiving weekly lessons in Jackson, Ouachita, Morehouse, Union and Monroe City Schools



Students from Boley Elementary participated in a Bully Proof video contest - to see all entries view our YouTube channel

Student Ambassadors commit to leading by example and pledge to be drug and alcohol free.



U-ACT NORTHEAST DELTA HUMAN SERVICES AUTHORITY DRUG-FREE COMMUNITIES

Working as a Coalition in Union Parish to develop and implement a 5-year plan to address underage drinking and prescription drug abuse.

1,375 pounds of "prescription take back" drugs collected at 9 sites in region

27 U-ACT student ambassadors selected

810 students at Red Ribbon Week (October) and Orange Ribbon Week (April)

50 community partners trained in High in Plain Sight

120+ local pharmacists, first responders and community members trained for High in Plain Sight, a three part speaker series, in partnership with the ULM College of Pharmacy

2 National Prescription Take-Back Days hosted in partnership with the DEA, local law enforcement, agencies, and the ULM College of Pharmacy

STEWARDS OF CHILDREN DARKNESS TO LIGHT

THE BEAIRD
FOUNDATION



Empower communities to help prevent child sexual abuse. D2L program raises awareness of the prevalence and consequences of child sexual abuse and educate adults about the steps they can take to prevent, recognize, and react responsibly.

3 Parishes (Ouachita Parish, Caddo Parish and Rapides Parish)

3,000+ people served through the Pinwheel ceremony, stakeholder meetings, and social media,

3,000 Pinwheels Planted in the three parishes served.

Our goal is to raise awareness, strengthen community connections and increase the success rate of preventing child abuse and neglect.

MENTAL HEALTH CONSULTATION

TULANE INSTITUTE
OF INFANT AND
EARLY CHILDHOOD
MENTAL HEALTH

Educating teachers and parents on developmentally-appropriate practices.

12 parishes served

100 teachers, directors/owners, and parents in Type III child care centers received consultation and training

14 centers served in 6 month increments
Provided follow-up to any center served in the last 12 years

300 children served

POSITIVE ACTION

NORTHEAST DELTA
HUMAN SERVICES
AUTHORITY

Character building and social-emotional development for Kindergarten and 1st grade students.

2nd year Pilot program at 2 schools

Madison James Foster Elementary (MCS) and Robinson Elementary (OPS)

9 classrooms receiving services

240 children receiving weekly lessons



When Prevent Child Abuse Louisiana closed its doors, the Children's Coalition stepped up and continued the Pinwheels for Prevention program, supported by the Beaird Foundation. Ceremonies were held in **Monroe, Alexandria and Shreveport** to share the importance of child abuse prevention.

YOUTH DEVELOPMENT

SOS: SIGNS OF SUICIDE

LIVING WELL FOUNDATION, UNION PARISH, OUACHITA PARISH AND MONROE CITY SCHOOLS, COMMUNITY SPONSORS

Helping middle school students to recognize signs of depression and suicide in themselves and others.

- 2,500 teens trained on how to recognize the signs of depression and suicide
- 1,200 students screened for potential mental health problems
- 110 students referred for further evaluation/treatment of significant mental health problems
- 4 schools: Lee Junior High, Union Parish Middle School, Ouachita Junior High and Sterlington Middle School



Members of 100 Who Care NELA selected the Children's Coalition SOS program to receive funds from their quarterly meeting in the spring of 2019.

Staff represent Youth Development Programs during the annual Living Well Foundation luncheon.



LOVE 146: NOT A #NUMBER

LOUISIANA PUBLIC HEALTH INSTITUTE

A child sex trafficking and exploitation prevention curriculum developed by Love 146.

- 1,000 students trained at Sterlington Middle, Lee Junior High, Carroll Junior High and Ouachita Junior High
- 3 staff and 1 board member trained in curriculum

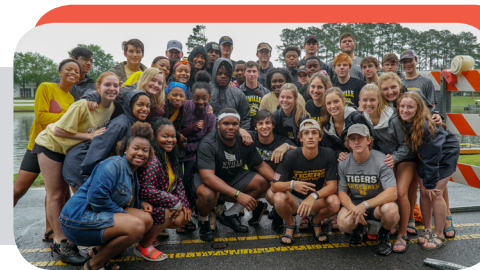
Children's Coalition for Northeast Louisiana

OUACHITA YOUTH LEADERSHIP SUMMIT COMMUNITY SPONSORS

Developing leadership skills in students chosen by school counselors.

265 middle and high school students from 34 Monroe City, Ouachita Parish and area private and parochial schools attended the third annual summit at ULM

Students from Lee Junior High listen to speakers during the Ouachita Youth Leadership Summit



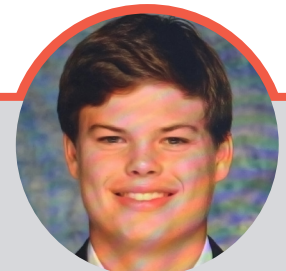
Boats filled with middle and high schools in the region join together to row in the 2019 First National Bank Bayou DeSiard Dragon Boat races.

OUACHITA ADOLESCENT HEALTH COALITION LOUISIANA PUBLIC HEALTH INSTITUTE

Building a Coalition to help identify and meet the reproductive health needs of adolescents

- 3 Ouachita Parish Health Coalition meetings
- 5 Parent Night Sessions addressing issues related to adolescent health and healthy behaviors and relationships

Thank you to the Children's Coalition and Miss Jan for the great opportunities to show leadership through the dragon boat races, suicide prevention training and volunteering. Unfortunately, I have had to put my SOS training to use with a friend and I am thankful for the ability to be a leader and the eyes and ears for my school.



Ely McPherson
Neville High School student

PARENTING

FAMILY RESOURCE CENTER

LOUISIANA DEPARTMENT OF CHILDREN AND FAMILY

Providing parenting, family skills building and visit coaching to help reunite families in the DCFS and foster care system.

- 207 Referrals
- 40 Triple P Seminars
- 147 participants in 20 Adverse Childhood Experiences (ACE) Seminars
- 7 Sixteen Week Cohorts for Nurturing Parenting Program
- 42 sessions Family/Life Skills
- 30 clients Referred for Visit Coaching



Parents complete 16 weeks of the Nurturing Parenting Program and celebrate milestones

Our Ruston first cohort for the Nurturing Parenting Program graduated 8 participants.



JUS4ME TEEN PARENTING

UNITED HEALTHCARE, LOUISIANA CHILDREN'S TRUST FUND

Encouraging healthy pregnancy outcomes for pregnant and parenting teens at the school site through Nurturing Parenting for Teen Parents.

- 38 total sessions
- 2 schools: Carroll and Wossman

Children's Coalition for Northeast Louisiana

NURTURING FATHERHOOD

COMMUNITY SPONSORS

Provides fathers with information that will reshape and enhance their emotions, thoughts, and parenting techniques by exploring fathering styles, self-nurturing, overcoming barriers, positive disciplining, and teaching values.

28 Participants

Fathers complete training during our Nurturing Fatherhood sessions led by Damon Nailor.



TIME TO TALK

COMMUNITY SPONSORS

Partnering with KEDM + BayouLife Magazine to bring accurate and appropriate information from state and local experts about issues that affect children, so that parents can understand and communicate with and about them

- 12 monthly articles in BayouLife Magazine
- 24 bi-monthly segments on 90.3 KEDM Public Radio
- 7,500+ reached on social media

I learned a great deal about myself as a parent and a person. I loved being with the staff and have enjoyed them being part of my life, my family and my case plan.

Cynthia, Nurturing Parenting Graduate



SPECIAL EVENTS

DIA DE LA FAMILIA



OCTOBER 13, 2018 (Union Parish)
MAY 18, 2019 (Ouachita Parish)

Eighth annual year celebrating Hispanic culture and heritage in Union Parish and first event in Ouachita Parish, providing vital community resources for all ages.

460 families attended in Union Parish
415 families attended in Ouachita Parish

OCTOBER 1, 2018

124 Pre-K and Kindergarten classrooms participated in Bully Proof - this campaign reinforced teaching all children how to socialize and respect the differences of others. Classes also created videos by using skits, songs and props as a fun way to let the community know that they are Bully Proof. Schools are supporting efforts throughout the year by placing Buddy Benches on playgrounds.

BULLY PROOF AWARENESS KICK-OFF



OUACHITA YOUTH SUMMIT



NOVEMBER 7, 2018

Fourth annual gathering of nominated junior and high school students from area public, private and parochial schools to learn leadership skills. Students learned about topics ranging from healthy choices, social media safety, bullying, suicide and more.

265 students representing | 34 schools

WHAT WORKS CONFERENCE | RISK + PROTECTIVE FACTORS



NOVEMBER 8, 2018

The sixth annual conference drew professionals in to learn about Risk + Protective Factors from Pamela Samuels Young, author of the award-winning book, "Anybody's Daughter." Topics included child-sex trafficking, trust- and trauma-informed approaches, mandated reporting, Adverse Childhood Experiences (ACE), and ways we can work together as a community to protect our children.

Sponsors included: Louisiana Public Health Institute (LPHI), Living Well Foundation, Brentwood Hospital, and Cypress Grove Behavioral Health System

NATIONAL PRESCRIPTION TAKE BACK DAY

OCTOBER 27, 2018
APRIL 27, 2019

Expired, unused and unwanted prescription medications were collected during 2 national take back days at 9 drop-off locations in Morehouse, Union, Ouachita and Lincoln parishes.

619 lbs collected on October 27, 2018 | 756 lbs collected on April 27, 2019

FIRST NATIONAL BANK BAYOU DESIARD DRAGON BOAT FESTIVAL



FRIDAY, MAY 10 - SATURDAY, MAY 11, 2019

Inclement weather didn't stop the fun at this year's festival - our signature fundraising event supporting underfunded programs of the Coalition such as Signs of Suicide, Nurturing Fatherhood and more.

Premier Sponsors included Choice Brands, Southern Beverage, Blue Cross Blue Shield of Louisiana, Cypress Grove Behavioral Health and Homeland Bank.

600 rowers | 1,500+ attendees | 11 boats filled with youth, including LA Center for the Blind

CALENDAR

SEPTEMBER 17, 2019 | Founder's Day

SEPTEMBER 21, 2019 | Super Saturday

OCTOBER 19, 2019 | Super Saturday
Dia de la Familia Union Parish

OCTOBER 26, 2019 | National Prescription Take Back Day

NOVEMBER 6, 2019 | Ouachita Youth Summit

NOVEMBER 16, 2019 | Super Saturday

DECEMBER 31, 2019 | School
Readiness Tax Credit Deadline

MARCH 18, 2020 | Annual Meeting

MAY 9, 2020 | Children's Coalition
Dragon Boat Festival

MAY 16, 2020 | Dia de la Familia
Ouachita Parish

ENGAGEMENT

SEED

The Grace Yellow House	Jennie Cole	Courtney & Shawn Hornsby	Lori & C. Louis Ray
Cathy Agan	Tracy Crump	Beverly Jarrell	Shelby Rybibki
Kathryn Bagley	Eryn Dennis	Shafonda Kline	Lisa Robertson
Mary Barrios	Gwen Dennis	Jennifer McDonald	Ruth Smith
Kristin Brown	Hannah Dozier	Patti McGilton	Brent Stovall
Jennifer Calhoun	Angela Drake	Pamela Newton	Lindsey Vincent
Shereta Carter	Earnestine Dunn	Haley Perot	Kimberly Walker
Brooke Cassady	Katee Fairchild	Doris Price	Amanda Washington
Laura Clark	Lorie Hamlin	Joyce Powell	Shondranise Wright

\$25

SPROUT

Jack Armstrong	Kelly Griffin	Marrise Hodges	Treana Pruitt
Judy and Charles Bell	Donna Guice	Sarah Johnson	Amy Pumphrey
Hannah Buxton	Dr. Janet Haedicke	Kourtney Keim	Sharolyn Shultz
Kendra Clement	Anna Ham	Katie McLain	Amy Stegall
Ann Cole	Shauna Harrell	Ann Mire	Lucinda Stringer
Stephanie Davis	Kelly Harper	Shannon Morrow	Jerry Thomas
Neil and Shirley Douglas	Gatha Haynes	Tamishia Moats	Tori Ward
Phyllis Fuller	Eddi Hernandez	Oksana Myers	Dorothy Williams

\$50

SEEDLING

4th JDC Court Reporters	R. Nicolas Anderson	Christiana Dewitt	Margaret Morison
Breard Shores and Associates	Janis Barazza Bunch	Jane T. Ellett	Patricia Morris
Broaden Horizons	Donna Bearden	Juanita Gooding	Damon Nailer
Turner Industries	Gerry Binkley	Joan Hampton	Ivy Parhms
Cognitive Development Center	Jeanene Blake	Larry And Nancy Head	Mark Parrish
Faith and Power Ministries	Todd Bonin	Scott Higginbotham	Alpa Patel
First West Baptist Church	Gary Booth	Ronald Hiltz	Ellen Prather
Kids Hope	Denise Breard	Douglas & Jodi Harvey	Eos & Brant Rios
Wilmore Automotive Project Help	Erika Breshears	Douglas Kimes	Julia Rodgers
Rita Agarwal	Jennifer Brister	Robert & Emily Knight	Navneet Sharma
Wendy Casamento Alexander	Ann Casey	Bernie Lear	Will & Jessica Schofield
	Amy Clancy	Jacqueline Matthews	Walter Snellgrove
	Laura W. Clark	James McDaniel	G. Yvonne Stephan
	Valerie Costanza	Regina McNeill	Lauren Stewart
	James and Julie Cunningham	Lisa Miller	Robert & Emily Williamson
	Judy DeMers		

\$100

MEMBERS

PLANT

CC's Coffee	Foundation	Monroe Medical Center	Andrea Dyer
Christopher Youth Center	Winnsboro Rotary	Ryan Auto Group	Tim Green
Church of Christ at Parkview Drive Young Adult Ministry	Mitchell's Body & Frame	Tremaine Baker	Karla Parker
The Joe W. & Dorothy Dorsett Brown	Monroe Garden Study League	Steve & Mare Brennan	Cynthia & Arturo Rodriguez
	Newk's Eatery	Tom & Cathi Cox-Boniol	Dorothy Schween
	Ochsner LSU Health		Judge James "Jimbo" Stephens

\$300

GROW

Mark Wilson	Jan Daniels
Community Foundation of Middle Tennessee	Leigh Hersey
Cummins & Fitts	Janie Humphries
Monroe Housing Authority	Jay Morris
	Marjorie Ritchers
	Holley Trappey
	Wendy Napoli

\$500

ALIVE

Big Whitt 77 Foundation	Meridian Behavioral Health
CenturyLink	Lynn V. Clark
Lambda Sigma Chi Sorority	David Hartt
	Connie Smallwood

\$1,000

STRIVE

Louisiana Public Health Institute
Louis & Lynda Gavioli
F. Max Merelll

\$2,500

THRIVE

Jean and Saul Mintz
Julie and Dewey Weaver

\$5,000

AWARDS



RALPH WEBB
Volunteer of the Year



DAVID T. COLE, CPA
Saul Mintz Award



KERRY HEAFNER, LSU AGCENTER
Friend of the Coalition



ASHTON FIELDS
Youth Volunteer of the Year